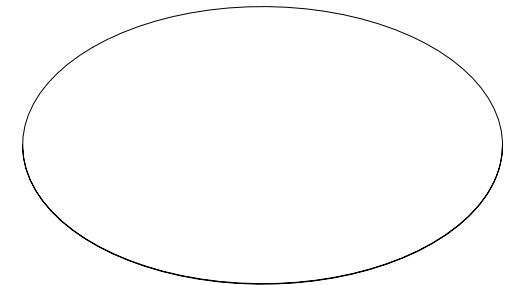
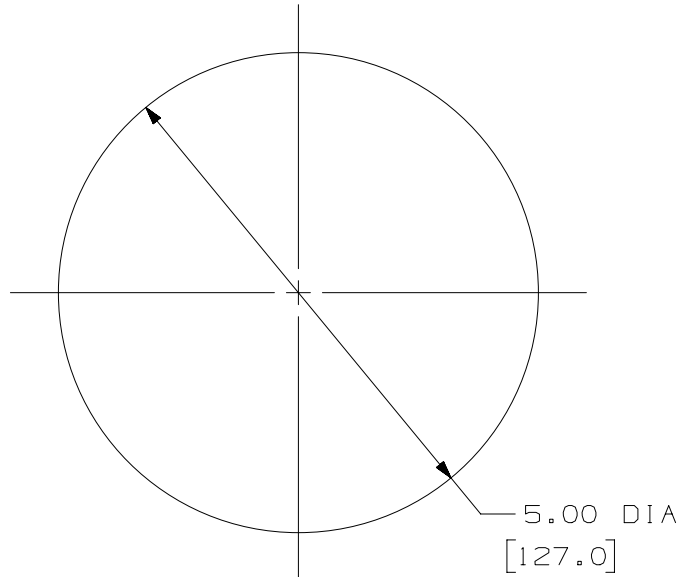


THIS COPY IS PROVIDED ON A RESTRICTED BASIS AND IS NOT TO BE USED IN ANY WAY DETRIMENTAL TO THE INTERESTS OF PANDUIT CORP.

| | |
|------------------------|--|
| PANDUIT PART NUMBER | WEIGHT |
| FLCFPLF - X | 0.04 LB./PACKAGE 18.0 GRAMS/PACKAGE |

NOTES:

1. SEE CURRENT CATALOG FOR ADDITIONAL PART NUMBER SUFFIXES TO INDICATE PACKAGE QUANTITIES.
2. STANDARD PACKAGE QUANTITY:
10 SHEETS PER PACKAGE
3. PROPER USE OF THIS FILM WILL PROVIDE THE REQUIRED END FACE POLISH FOR SINGLEMODE TYPE CONNECTORS.
4. POLISHING FILM CONSISTS OF A LAPPING MEDIA BONDED TO A MYLAR BACKING.
5. ALL DIMENSIONS IN [] ARE METRIC.



| | | | |
|--|--|-----------------------------|--|
| PART NUMBER | | FLCFPLF - X | |
| TITLE | | | |
| FINAL POLISH LAPPING FILM | | CUSTOMER DRAWING | |
| ITEM REVISION NAME | | M01575BD/00 | |
| DATASET FILE NAME | | M01575BD_DC/00E | |
| UNLESS OTHERWISE SPECIFIED, DIMENSIONAL TOLERANCES ARE: IN (mm) | | MATERIAL: | |
| .X ± .XX ± | | .XXX ± ANGLES ± | |
| | | DRAWING NUMBER: 01575-05 | |
| DRAWN BY EFK | | DATE 10-21-03 | |
| CHK RTFI | | SCALE NONE | |
| SHT 1 OF 1 | | SIZE A | |

| REV | DATE | BY | CHK | APR | DESCRIPTION | ECN |
|-----|---------|-----|-----|-----|---------------------------------|----------|
| 4 | 5/19/15 | JSP | WJM | RWB | A. REVISED DRAWING TITLE BLOCK. | 01575-05 |

D101000DA/14